



**CREAGH**  
INNOVATION IN CONCRETE

# ARCHITECTURAL CONCRETE COLOURS

**rapidres™**  
Fastrack Build System



Colour: Aspen  
Toronto Primary School, Livingston by Creagh.

## CREAGH ARCHITECTURAL CONCRETE STANDARD COLOUR RANGE

The Creagh Architectural Concrete range uses a variety of colour, texture and decorative finishes, created for architects, designers, house developers and contractors alike, illustrating how you can achieve powerful and dynamic aesthetics on a façade.

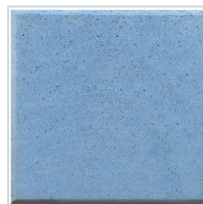
The range allows architects to widen their scope and unleash their creative flair when designing prestigious buildings that require a superior finish.

Creagh offer 10 standard colours within the Architectural Concrete range. Special colours are available from a customisable pallet, upon request. It is recommended products are verified against a sample (3 production sized units manufactured over 3 days) before ordering. A bespoke colour matching facility is also available.

\*Signal & Charcoal are the darkest blacks within this range and have a restriction on panel size of no greater than 6m<sup>2</sup>



Aspen



Azure



Charcoal\*



Copper



Pearl



Porcelain



Signal\*



Stone



Terracotta



Lunar Steel



Barley



Camel